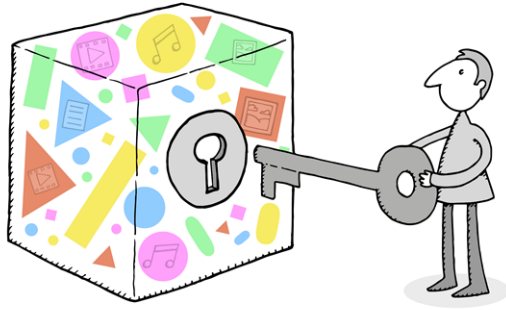


# Indiana University Digital Preservation



## Stewarding Our Collections for Future Researchers

The mission of the Digital Preservation Unit at Indiana University Bloomington is to ensure the ongoing access and stewardship of digital content for which IU Libraries has a mandate to preserve. As a memory institution, IU Bloomington is responsible for ensuring the ongoing accessibility of our collective scholarly record for future generations of students and researchers. The IU Libraries' Digital Preservation Unit is responsible for the continual development, testing, and evaluation of policies and procedures in order to ensure the appropriate alignment with both IU's needs and field-wide best practices.

## What is Digital Preservation?

Digital preservation encompasses the policies, strategies, and actions necessary to provide ongoing access to digital materials authentically and accurately. Policies govern the strategic development of a preservation plan and lay out the institutional commitment to ongoing preservation. Strategies and actions address all points in the lifecycle of a digital object - e.g., creation, storage transfer, and ongoing maintenance. Digital preservation activities include disaster planning, data and tool migration, preservation metadata capture, etc. Materials to be digitally preserved include those that are created through digitization projects and those created and maintained digitally ('born digital'). (1) (2)

## DigiPres@IU Links

### Documentation

### Services

### Resources, Training & Best Practices

## Quick Links

[Born Digital Preservation Lab](#)

[Indiana University Libraries Digital Preservation Policy](#)

[Digital Preservation Strategic Vision, 2016-2018](#)

---

## Contact Us

[bdpl@indiana.edu](mailto:bdpl@indiana.edu) | (812) 856-5295

---

The Digital Preservation Unit is part of the Indiana University Libraries Bloomington [Library Technologies Department](#).

See [Digital Preservation Unit Administration](#) for internal files related to staffing and other functions.