

# Setting up and Running the DjVu Standalone Encoder - 5.0.3

## Setting up and Running the DjVu Standalone Encoder

This convenience utility is a Java Application that wraps the command line tools convert (ImageMagick), c44, and cjb2 (djvulibre).

### Contents

- [Setting up the DjVu Standalone Encoder](#)
- [Running the Encoder](#)

## Setting up the DjVu Standalone Encoder

### Installing ImageMagick

#### Download & Install

- Download ImageMagick's compiled binaries for your platform from and follow the instructions given to install to your local machine
  - <http://www.imagemagick.org/script/binary-releases.php> .

Remember where it was installed because it will need to be specified in the configuration file.

#### Recommend Installation Location

- ImageMagick File: **Q16-windows-dll 6.6.9-2**
- Recommend Location: **C:/Program Files/ImageMagick-6.6.9-Q16/**
  - The configuration file is set to look in this default place for ImageMagick.

### Installing DjVuLibre

#### Windows

- Download DjVuLibre's install file of the latest compiled binaries
  - [http://sourceforge.net/projects/djvu/files/DjVuLibre\\_Windows/](http://sourceforge.net/projects/djvu/files/DjVuLibre_Windows/)

#### Other platforms

- Download DjVuLibre's source files and follow their instructions for compilation and installation.
  - <http://sourceforge.net/projects/djvu/files/DjVuLibre/>

Remember where it was installed because it will need to be specified in the configuration file.

#### Recommended Extraction Location

- Extracted directory: **DjVuLibre-x.x.x-win32**
- Recommended Default Location : **C:/Program Files/DjVuZone/DjVuLibre/**,
- Recommended Path for the bitonal encoder **C:/Program Files/DjVuZone/DjVuLibre/cjb2.exe**.
- Recommended Path for the color encoder **C:/Program Files/DjVuZone/DjVuLibre/c44.exe**.
  - The configuration file is set to look in these default places for the encoders.

### Testing the DjVu Standalone Encoder

All files necessary to run the gui encoder can be found in the Client directory. Included in this directory is djvuencoder.jar which can be run from the commandline or from double clicking it.

- Running the Jar
  - Double click djvuencoder.jar
    - The jar requires that encoder.conf (The configuration file) is in the same directory
    - A different djvuencoder.conf can be specified in the jar file
  - The jar file will run similar to the example [Running the Encoder](#)

### Configuration File



#### Warning

Paths should use forward slashes, not the Windows-style backslash.

The configuration file **djvuencoder.conf**, located in the Client directory, has two example encoding profiles and one general configurable property. You can specify up to 10 encoding profiles (0 to 9) in the configuration file. Each encoding profile has seven configurable properties:

- **name**
  - This value should have a short name for this encoding profile.
- **icon** (Optional)
  - This value should have a file URI that points to an icon to represent this encoding profile.
- **convertPath**
  - This value should point to where you have the convert executable.
- **convertParams**
  - This value should have any parameters to be passed to the convert executable.
- **djvuPath**
  - This value should point to where you have the djvu encoder executables.
- **djvuParams**
  - This value should have any parameters to be passed to the djvu encoder executable.
- **bitonal**
  - This value specifies if this encoding profile is bitonal or not.

General configurable properties:

- **saveDirectory**



Make sure that this is set to a location where you have write privileges. On Windows 7, a user's desktop may not work.

- This value specifies a default directory to save encoded files. If this property is not set, the default location is the directory of the tiff to be encoded. The user is not given a choice of where to save files currently. This property can be set to the incoming directory Samba share on the Variations server to avoid having to copy the derivative files as a separate step.

## Example

### djvuencoder.conf

```
profile.1.name=Bitonal (400 DPI)
profile.1.icon=jar:file:///C:/Program Files/Variations/Client/djvuencoder.jar!/edu/indiana/dml/util/scoreencoder/bitonalIcon.png
profile.1.convertPath="C:/Program Files/ImageMagick-6.6.9-Q16/convert.exe"
profile.1.convertParams=+dither +antialias
profile.1.djvuPath="C:/Program Files/DjVuZone/DjVuLibre/cjb2.exe"
profile.1.djvuParams=-dpi 400 -clean
profile.1.bitonal=true
profile.2.name=Color (400 DPI)
profile.2.icon=jar:file:///C:/Program Files/Variations/Client/djvuencoder.jar!/edu/indiana/dml/util/scoreencoder/colorIcon.png
profile.2.convertPath="C:/Program Files/ImageMagick-6.6.9-Q16/convert.exe"
profile.2.convertParams=+dither +antialias
profile.2.djvuPath="C:/Program Files/DjVuZone/DjVuLibre/c44.exe"
profile.2.djvuParams=-dpi 400

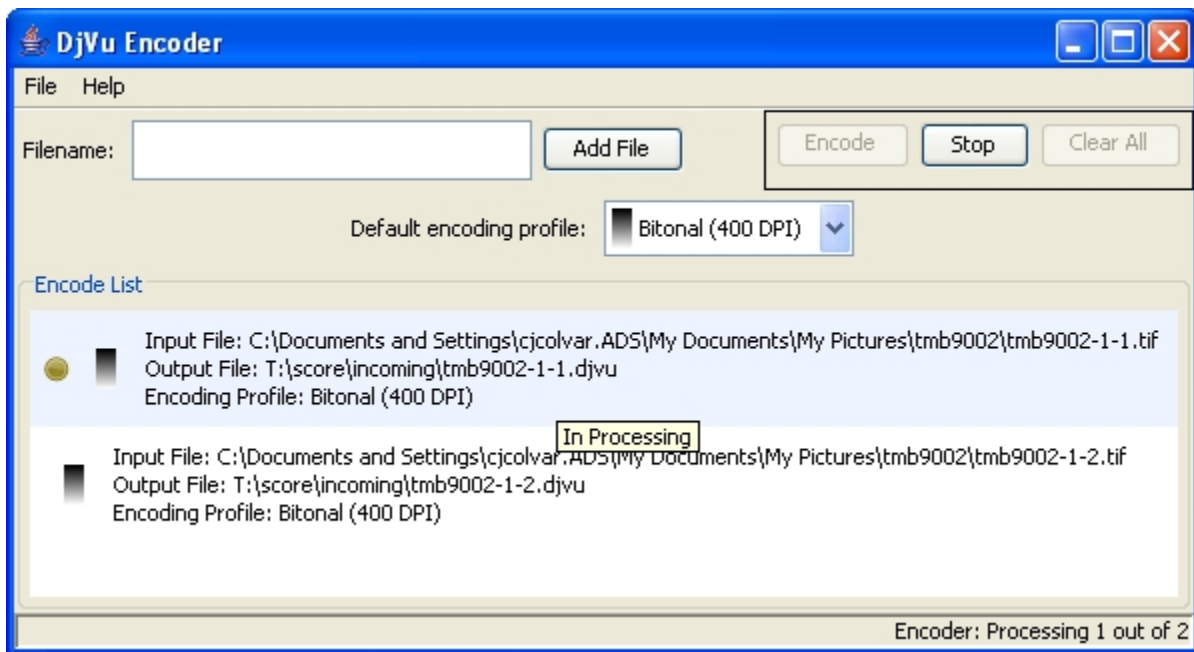
#Do not quote the following values!
#saveDirectory=Z:/score/incoming
```

## Installing the DjVu Standalone Encoder

See [Building the Client Installer](#) for instructions on building digitizer client installers which create a Desktop shortcut and start menu item for the DjVu Encoder.

## Running the Encoder

(As mentioned before the the encoder can be run with the djvuencoder.jar file)



## Adding Files to the Encode List

There are Four ways to add files to the Encode List:

1. Type the full file (or directory) path in the Filename text field and click **Add File**.
2. Click **Add File** and navigate to the file (or directory) and click **Open**.
3. Drag and Drop the file(s) (or directory) onto the Encode List.
4. Right-click on the Encode List and click **Add Files...** Then navigate to the file (or directory) and click **Open**.

Adding a directory to the Encode List will add **all** files in that directory or beneath that directory **except Thumbs.db**. If you attempt to add a file that already exists in the list with the same specified output file, it will be skipped without warning.

## Starting Encoding

Click the **Encode** button to start encoding the files in the Encode List. If a file already exists at the specified output location, a warning dialog will ask if you want to overwrite the preexisting file. Files that have already been successfully encoded and are still in the Encode List will be skipped unless their status has been reset by selecting the file, right-clicking the mouse, and clicking **Reset File Status**.

## Stop Encoding

To stop the current and all subsequent files from being encoded by the current encoding process, click the **Stop** button.

## Removing Files from the Encode List

To remove all files from the Encode List either click **Clear All** or right-click in the Encode List and click **Clear All Files**.  
To remove one or multiple files, select the file(s), right-click the mouse to bring up the popup menu, and click **Remove File**.

## Reset a File's Status

To reset the status of one or multiple files, select the file(s), right-click the mouse to bring up the popup menu, and click **Reset File Status**. The tooltip text for these files should read **Unprocessed** after doing this.

## Setting the Default Encoding Profile

To set the **Default encoding profile**, use the drop down box below the **Encode** button. The **Default encoding profile** will be applied to files as they are added to the **Encode List**, but will **not** change the encoding profile for files already added to the list.

## Setting a File's Encoding Profile

By default pages are set to the **Default encoding profile** when they are added to the **Encode List**. To set a page's encoding profile, select the file, right-click, and select the appropriate encoding profile from the **Set Profile** menu.

## Next Steps

After you have completed the encoder configuration process, you can begin building the installer at [Building the Client Installer](#).